

**Syngene**

Putting Science to Work

# Investor Presentation

**April 2023**



## Safe harbour



Certain statements in this release concerning our future growth prospects are forward-looking statements, which are subject to a number of risks, uncertainties and assumptions that could cause actual results to differ materially from those contemplated in such forward-looking statements.

Important factors that could cause actual results to differ materially from our expectations include, amongst others general economic and business conditions in India, business outlook of our clientele and their research and development efforts, our ability to successfully implement our strategy, our growth and expansion plans and technological changes, changes in the value of the Rupee and other currencies, changes in the Indian and international interest rates, change in laws and regulations that apply to the Indian and global biotechnology and pharmaceuticals industries, increasing competition, changes in political conditions in India and changes in the foreign exchange control regulations in India.

Neither the company, nor its directors and any of the affiliates have any obligation to update or otherwise revise any statements reflecting circumstances arising after this date or to reflect the occurrence of underlying events, even if the underlying assumptions do not come to fruition.



# Contents

<b>1</b>	<b>Operating Highlights</b>
<b>2</b>	<b>Syngene – Putting Science to Work</b>
<b>3</b>	<b>Syngene strengths</b>
<b>4</b>	<b>Financials</b>
<b>5</b>	<b>Shareholding and Share Information</b>
	<b>Appendix</b>



**1**

**Operating Highlights**



# Q4 FY23 performance

## Operating Highlights

- Strong growth in the fourth quarter, added to a positive performance over the course of the year
- The growth of Discovery Services and Dedicated Centers remained steady. The research facility in Hyderabad, which is a vital part of our Discovery Services, continued to expand and now houses approximately 900 scientists.
- Growth in Development Services was driven predominantly by further orders from existing clients, which reflects the high service levels and sustained on-time delivery
- Manufacturing Services continued to support the long-term partnership with Zoetis, following the successful regulatory inspections by the US, European and UK regulatory authorities.

## Q4 Financial Highlights

Total Revenue  
**Rs.10,172 Mn**

Reported EBITDA  
**Rs. 3,369 Mn**

Profit After Tax  
**Rs. 1,787 Mn**

EBITDA Margin at **33.1%**  
PAT Margin at **17.6%**

# Full Year FY23 performance

## Operating Highlights

- Delivered full-year results ahead of our upgraded guidance
- FY23 delivered the highest absolute year-on-year increase in revenue and EBITDA in the last 5 years
- All four divisions of the Company delivered sustained growth through the year.
- The biologics manufacturing partnership with Zoetis signed in the first quarter, is expected to be worth US\$ 500 Mn over 10 years, subject to regulatory approvals and market demand
- Our partnership with BMS marked 25 years of collaboration in March 2023. It is BMS' biggest R&D facility outside the US
- Commissioned a state-of-the-art sterile fill-finish facility and a kilo lab for polymers and specialty materials
- Dedicated PROTACs (proteolysis-targeting chimeras) facility for clients involved in researching treatments for cancer and other therapy areas was opened at Hyderabad
- In addition to successful regulatory audits of its biologics facilities, Syngene successfully nearly eighty audits from regulators and clients in the past year endorsing the quality standards

## FY23 Financial Highlights

Total Revenue  
**Rs.32,638 Mn**

Reported EBITDA  
**Rs. 10,053 Mn**

Profit After Tax  
**Rs. 4,644 Mn**

EBITDA **Margin at 30.8%**  
PAT **Margin at 14.2%**

2

Syngene – Putting Science to Work



# Partner in innovation: #Puttingsciencetowork

## Who we are and what we do

*We aim to be a world class partner delivering innovative scientific solutions for clients*



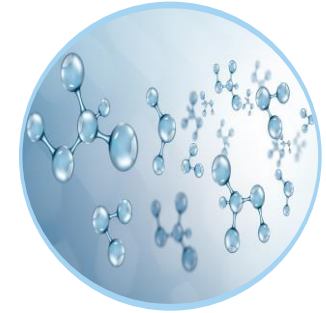
*We offer integrated solutions across research, development and manufacturing*



*Sector expertise include pharmaceuticals, biotech, nutrition, animal health, consumer goods and specialty chemicals*



*Our team includes more than ~5,000 scientists out of total ~6,000+ headcount, operating across 3 state-of-the-art campuses located in India's leading life science hubs: Bangalore, Mangalore and Hyderabad*



*Established track record in discovery research and development for small and large molecules. Emerging presence in commercial manufacturing*



# Key facts and figures

**400+**  
active clients

**15**  
collaborations  
with top 20 pharmaceutical  
companies

**400+**  
patents  
held with clients

**World class  
infrastructure**  
of 2 Mn+ sq. ft. qualified to  
meet international  
standards

**Rs. 45,587 Mn**  
(US\$563Mn\*)  
Gross Block of  
Investments ^

**Rs. 32,638 Mn**  
(US\$403Mn\*)  
FY23 Revenue

**Rs. 4,644 Mn**  
(US\$57Mn\*)  
FY23 PAT before  
exceptional item

**~6,000+** headcount  
including **~5,000+**  
talented scientists



## International accreditations



- USFDA, OHSAS 18001
- GLP, cGMP, AAALAC & CPCSEA Certified facilities
- CAP accreditation, ISO/IEC 27001:2013 accreditation
- EMA and PMDA approved, AAALAC accredited facility
- The safety assessment laboratories and large molecule bioanalytical lab are ISO IEC 17025:2017 certified by the National Accreditation Board for Testing and Calibration Laboratories (NABL)



# Our experience spans multiple industry segments and partnerships with global leaders across the world

## Large & mid-sized biopharma



## Emerging biopharma



## Universities



## Animal health



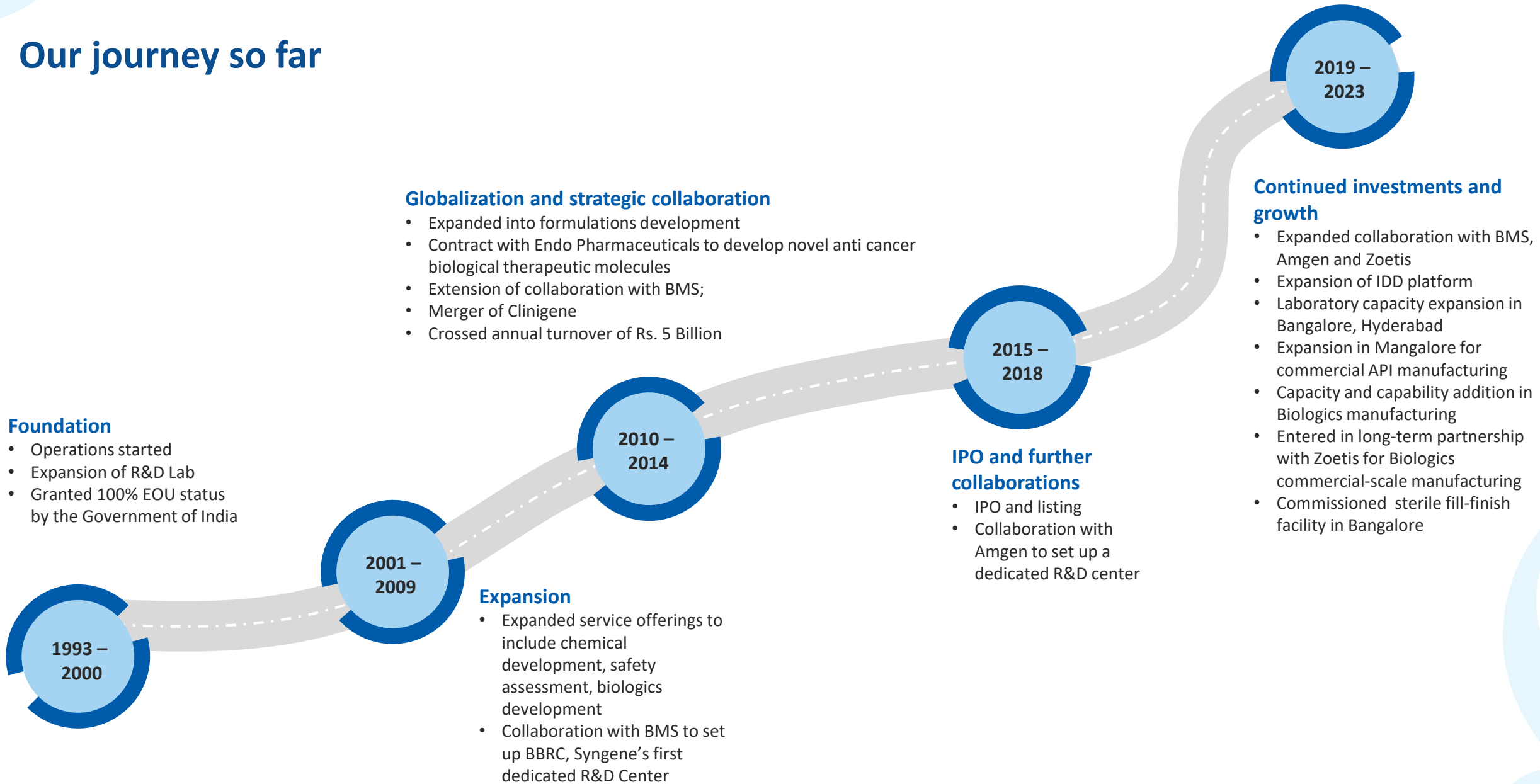
## Agrochem



## Consumer products



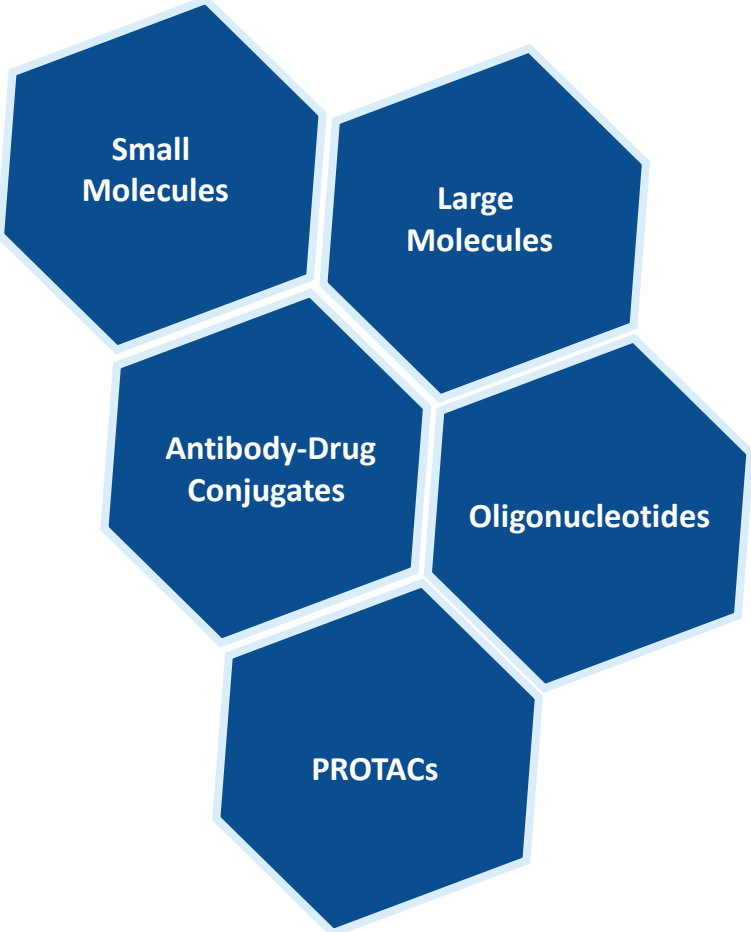
# Our journey so far



# Our broad capabilities, spanning the value chain, facilitates integration and captures additional benefits for clients

Research business		Development and Manufacturing business	
<h3>Discovery Services</h3> 	<h3>Dedicated R&amp;D Centers</h3> 	<h3>Development Services</h3> 	<h3>Manufacturing Services</h3> 
<p><b>Flexible Platform</b> with capability across multiple modalities including small molecule, large molecule, peptides, oligonucleotides, antibody drug conjugates, PROTACs</p> <p><b>SynVent</b> - our proprietary platform for Integrated Drug Discovery</p> <p><b>SARchitect</b>- our proprietary platform for data visualization and analysis, including features specifically designed to foster collaboration between scientific experts across geographies</p>	<p><b>Ring-fenced</b> infrastructure for exclusive operations for an individual client</p> <p><b>Dedicated</b>, multi-disciplinary team of scientists</p> <p><b>Access</b> to entire Syngene ecosystem for specialist research and development operations</p>	<p>Pre-clinical to clinical trials</p> <p>Drug substance and drug product development</p> <p>Associated services to demonstrate the safety, tolerability and efficacy of the selected drug candidate</p> <p>cGMP-compliant manufacturing of clinical supplies, and registration batches for small molecules</p>	<p>Manufacturing of small and large molecules for commercial supplies</p> <p>cGMP-compliant facilities</p> <p>State-of-the art API manufacturing and Biologics manufacturing facilities</p>

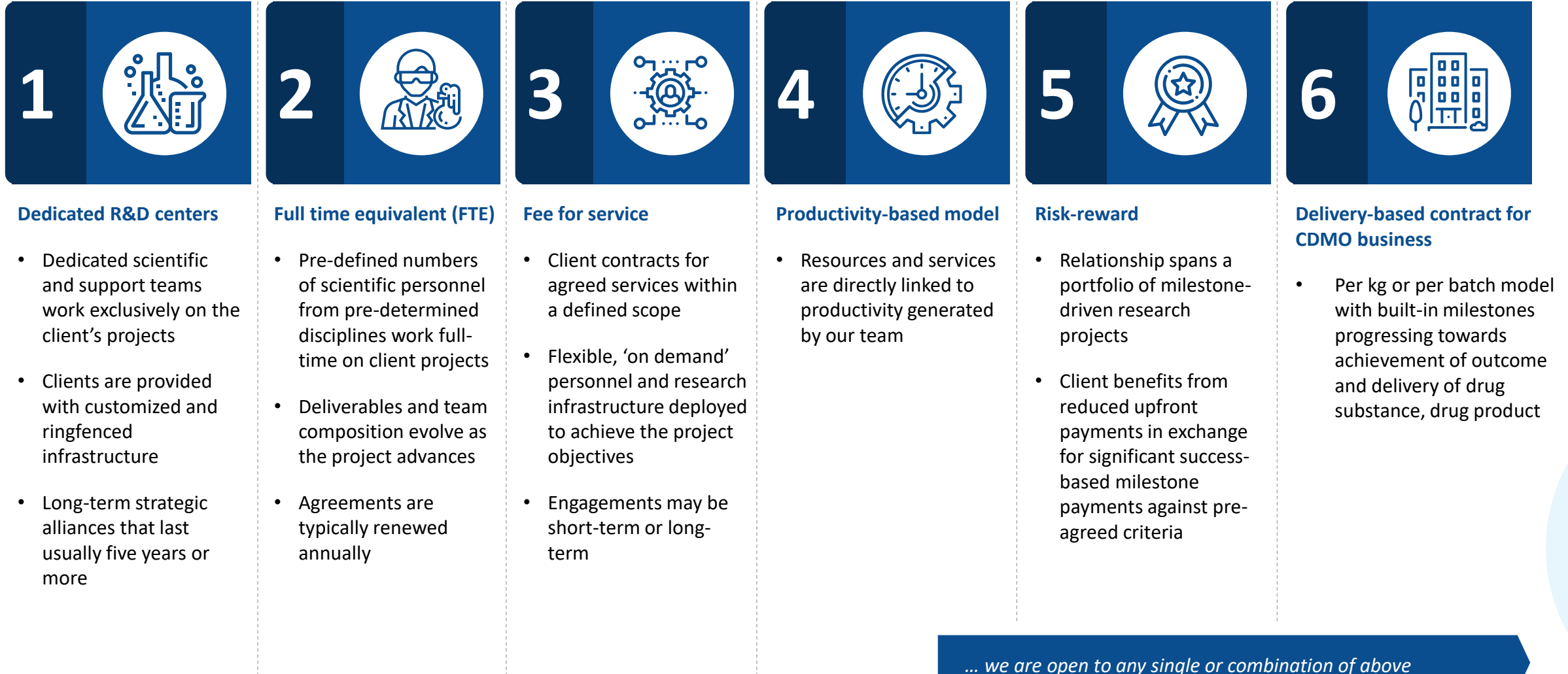
# A 'one-stop-shop' for discovery research, development and manufacturing services (small and large molecules)



Discovery	Development	Manufacturing
Chemistry	Drug Substance Development	Clinical Supplies
Biology	Drug Product Development	
	Integrated Drug Substance – Drug Product	
Safety Assessment		Specialty Molecules
Integrated Drug Discovery	HPU* (Phase 1)	Commercial Supplies
	Bio Analytical Lab (Large Molecules)	
Therapeutic Antibody Discovery & Engineering; Cell Line Development	Stability & Analytical Services	
Bioprocess Development, Process Characterisation, Clinical Manufacturing (Microbial & Mammalian)		
<b>Research Informatics:</b> Bioinformatics, integrative analysis, target dossiers, systems modeling, cheminformatics and AI		

\* Human Pharmacology Unit

# Flexible collaboration models



# Our state-of-the-art infrastructure

## Bangalore campus

90 acres housing most of Syngene's capabilities



## Biologics

### Bangalore campus

Manufacturing plant scale:  
Mammalian- ~100-2000L  
Microbial - ~200-500L

**Discovery Services**  
**Hyderabad campus**  
commenced operation in  
Aug 2019



## API Manufacturing Mangalore campus

Commissioned March 2020  
Capacity: 70KL  
Reactor size: 2-12KL

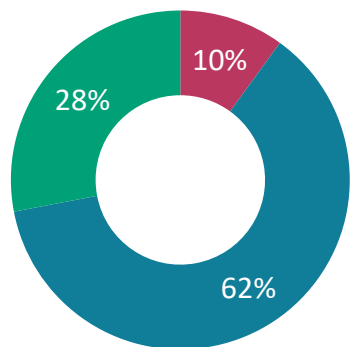


# Experienced workforce: building capabilities and careers

~6,000+  
total headcount

**5000+ scientists**  
delivering high quality  
solutions – create a  
competitive edge

■ PhDs ■ Master's Degree ■ Others



## Inspiring technical excellence and providing opportunities to grow

### Nurturing young talent and enhancing science skills

- Syngene Training Academy offers new graduate recruits a six-month extended induction to help them understand the Company's vision and values while acquiring the skills to be an industrial scientist
- Science Certification Program is open to all employees to enhance their capabilities keep their skills up to date and provide opportunities for continuous learning

### Developing leaders and managers

- Emerging Leaders Development Program is designed to help strong managers transition from managerial to leadership roles
- Manager Development Program is designed for first- and second-line managers to develop basic management skills and performance management to help them manage their teams and ensure that they are making a positive contribution to the organizational goals

### Promoting workplace diversity

- The Company has strong equal opportunity policies to protect against all forms of discrimination and provide a workplace where all employees can deliver their best work
- Support provided to parents of young families. 27% of employees are female and 14% of management positions are held by females

# Operational robustness driving strategy execution

## Continuous improvement embedded in operations driven by certified operational leaders

Six Sigma Black Belt certified staff in each service line and support function  
Green belt certified staff across operations  
All employees white belt certified

## Quality management system: digitized and audit-ready

80 customer and regulator audits in the last financial year  
**8 successful USFDA audits in the last 4 years**

## Client-focused commercial organization

Leaders based in the US, Europe, UK and Asia  
Close to client locations



## Focused execution through strong Project Management

Structured program management for executing client projects enabled by SynPro platform and SynPro Academy ensuring delivery of client projects

## Digital as a differentiator

AI capability in all research teams  
IoT for maintenance and infrastructure reliability  
Data Management, IT infrastructure and security systems to strengthen our proposition as a strategic partner to clients

## Strategic Sourcing that makes a difference

Strategic supplier management to avoid supply chain disruption  
Supply distributed across the world to ensure business continuity

# 3

## Syngene strengths



# Syngene strengths

## A global scale CRO/CDMO

- Integrated Drug Discovery, Development and Manufacturing service provider
- Small and large molecules, ADCs, oligonucleotides
- Listed on Indian Stock Exchanges (NSE and BSE)



## Solutions through innovation

- IP fully assigned to clients
- Track record of data management and security
- Over 400+ patent filings by clients recognizing Syngene scientists



## Quality matters

- Fully digitized quality organization
- Strong compliance track record with global regulators
- US FDA, EMA and PMDA approved, GLP certified, AAALAC accredited facilities
- 80 client and regulator audits in the last financial year



## Science in our DNA

- Located in 3 top India life science hubs: Bangalore, Mangalore and Hyderabad
- ~5000+ qualified scientists including ~500 PhDs (~6,000+ total headcount)
- Resilient supply chain management
- 2 Mn+ sq. ft. world-class R&D and manufacturing infrastructure



## Blue chip client list

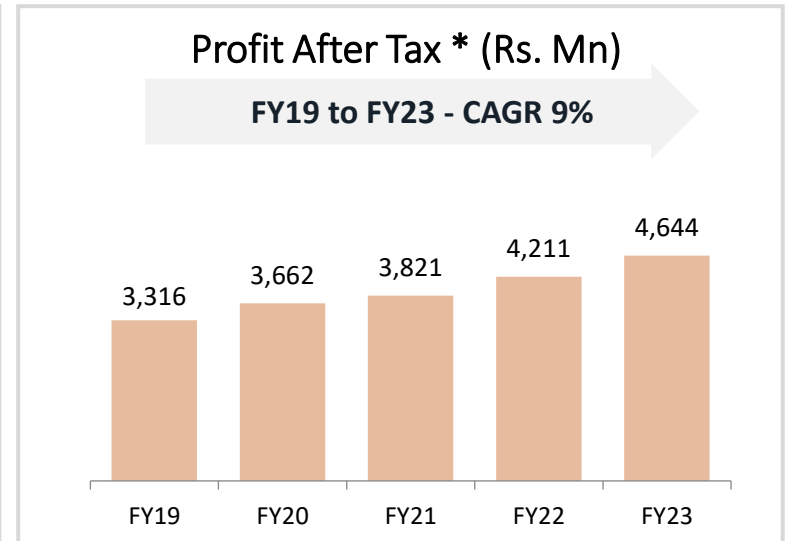
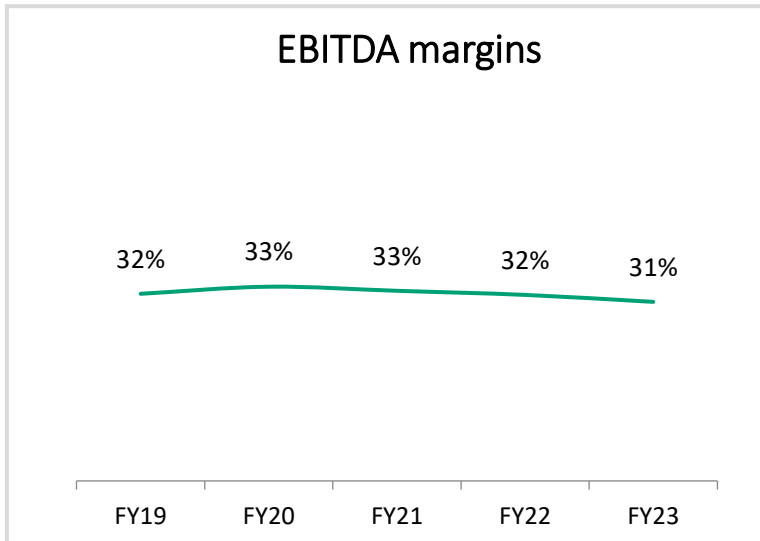
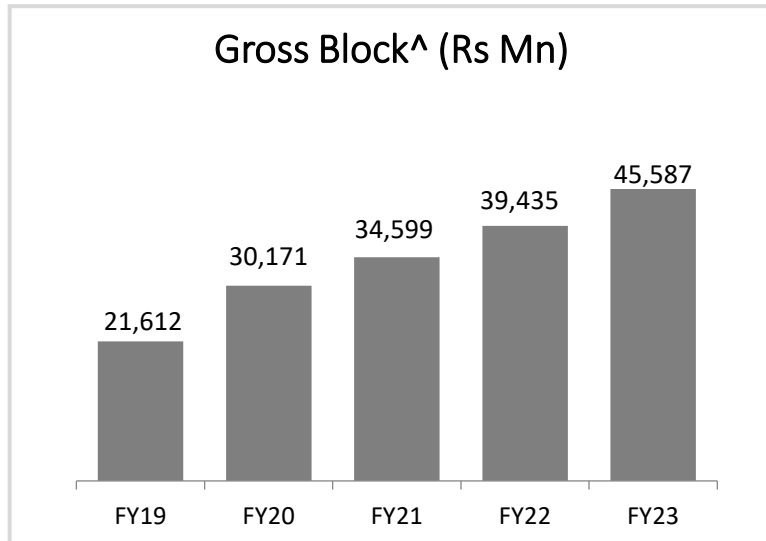
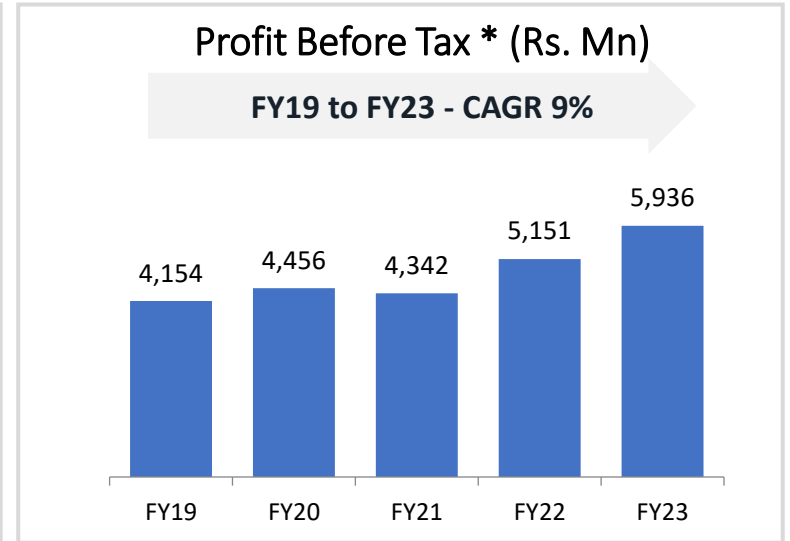
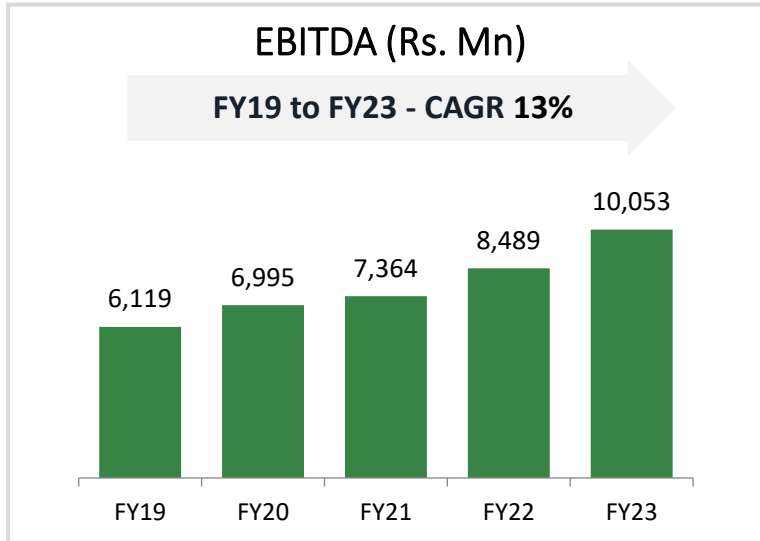
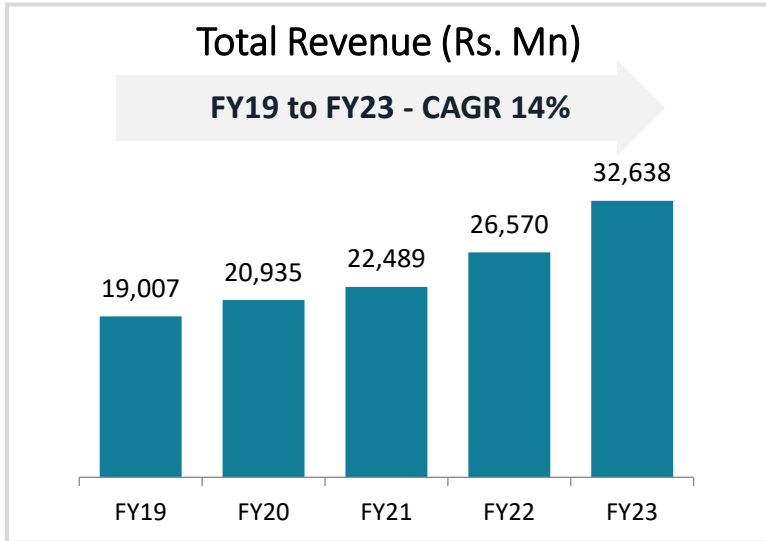
- + 400+ active clients
- Partnering with large / mid-size / emerging biopharma and other industries
- Clients concentrated in US, Europe & Japan
- Track record of working with diverse industry sectors



## Making a difference

- Partnerships have delivered numerous clinical candidates
- Delivery history for integrated CMC programs up to clinical trials and beyond

# Strong track record of growth and profitability



# Levers for future growth

## Expand/extend existing clients

- Service integration
- Flexible business models including dedicated centers

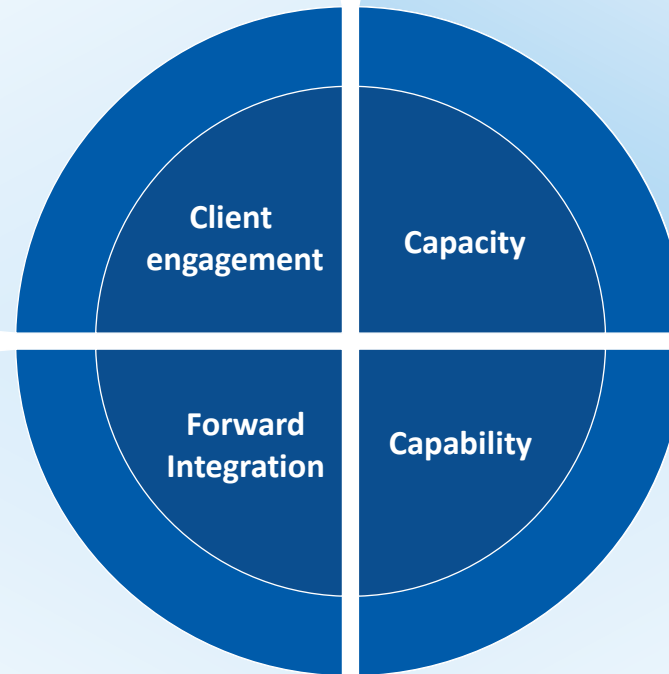
## Engage New Clients

- Tailored service offerings, high quality infrastructure and access to qualified personnel

Offtake in commercial manufacturing in both biologics and small molecule API

## Integrated Drug Discovery

- Proprietary model leveraging breadth of capabilities to deliver end-to-end project requirements



## Capacity expansion

- Continuous investment
- FTE services, manufacturing, formulation, biologics, stability

## Capability additions

- New capabilities across multiple domains including adjacent sectors
- Stability, analytical and bio-analytical services, viral testing, clinical scale injectable fill finish
- New platforms: antibody drug conjugates, CAR-T, PROTACs

# Committed to safety and sustainability

## Safety is our first priority

- Accredited with ISO 45001:2018 for Occupational Health and Safety (OH&S) measures
- Risk assessments are an integral part of our operation: a proactive approach in incident prevention
- Kavach, our flagship safety program, has delivered improvement in safety metrics and drives focus on industrial safety for all employees
- 13.7 million manhours without Lost Time Incident (LTI) on rolling 12-month basis for FY22

## Committed to environmental protection

- Accredited with ISO 14001:2015 for our Environment Management System
- **20%** reduction in freshwater usage; 152KL rainwater harvested
- **92%** of the total waste generated is recycled in an environment-friendly manner for FY22
- **3R's** operations constantly monitored to identify opportunities to reduce, reuse, and recycle waste
- **59,700 tCO<sub>2</sub>** emissions avoided in FY22 through efficiency measures
- **74 Mn KWH** of electricity usage from green energy sources - up 18% from FY21
- **86%** of total energy consumption from green energy sources in FY22
- Member of the United Nations Global Compact

Refer to the [CSR link](#) on our website to know about our corporate social responsibility pursuits on healthcare, education, environment, rural development

Refer to the [ESG Report](#) on our website to know more

**Syngene**

All figures are as on March 31, 2022, unless otherwise specified

# Industry recognition for our scientific capability and best practices



- **Bio-Excellence Award 2018:** At Bengaluru Tech Summit, Bengaluru
- **Best Bioprocessing Excellence Award 2018 -** At 5<sup>th</sup> Biologics Manufacturing Asia, Singapore
- **Healthcare Company of the Year 2018:** At the 7<sup>th</sup> Annual VC Circle Awards 2018, Mumbai
- **HR Excellence Award 2018 'For Best Talent Management Strategy':** World HRD Congress, Mumbai
- **CMO Leadership Award Winner 2020 -** under Categories: Capabilities, Compatibility, Expertise and Service
- Bioprocessing Excellence Awards 2020 in the category 'Bioprocessing Excellence in South Asia—Viral Clearance and Safety Testing'
- **Great Place to Work Certified™ Company** (ASSOCHAM) CSR & NGO Awards 2020 for our contribution to COVID-19 relief work in Karnataka.
- **CMO Leadership Awards 2022** Received 6 awards for all categories, including Capabilities, Compatibility, Expertise, Quality, Reliability and Service
- **CMO Leadership Award Champion 2022** Additional Recognition received in CMO Leadership Awards 2022 for top performance in all **categories**
- **'Most Preferred Workplaces of 2022' by Team Marksmen Daily in association with India Today** Recognized for its holistic reorientation of the business landscape in the context of the pandemic, and for creating a collaborative and empowering culture for its employees.

2018

2019

2020

2021

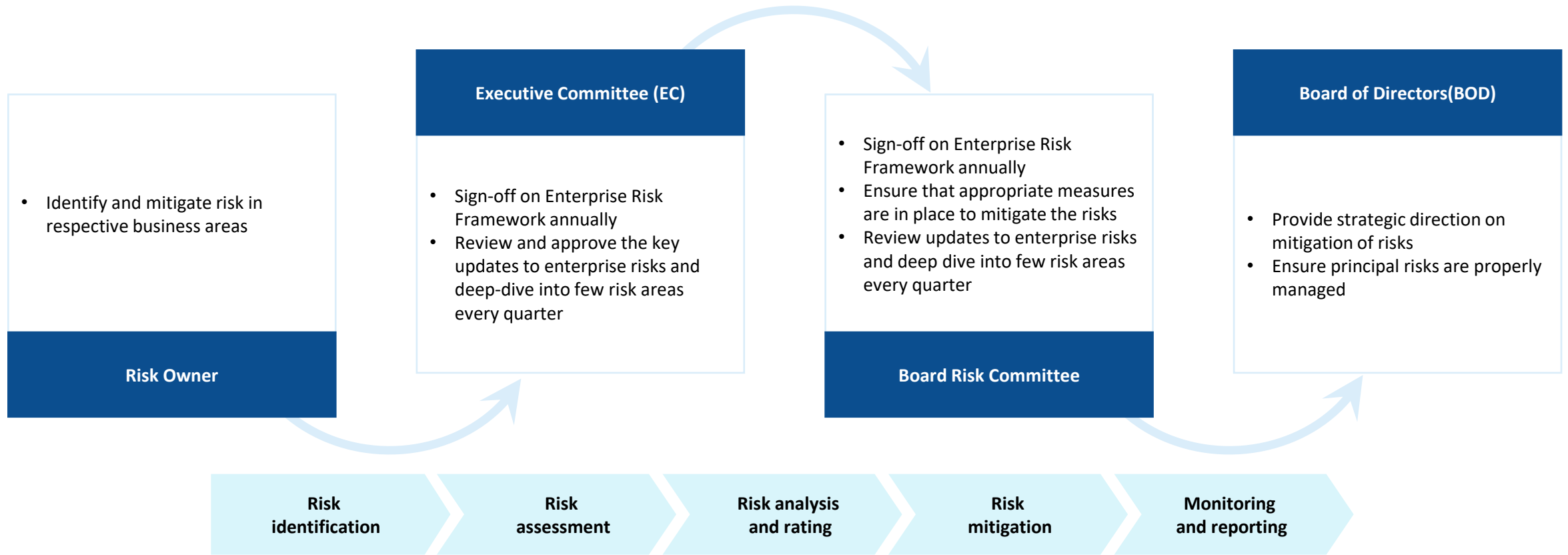
2022

- Ranked as one of the **25 fastest growing companies in India** by Outlook Business
- **CMO Leadership Awards 2019** - Presented by Life Science Leader Magazine
- **FICCI CSR Award for Environmental Sustainability** -At the 17th Edition of the awards in New Delhi
- **Safe Workplace Champion Award** - At the 8th Manufacturing Supply Chain Summit and Awards
- **Best Leadership Development Program for Middle Management Award** - At the 6th Global Training and Development Leadership Awards
- **India Pharma Award 2019** - For "Excellence in Contract Research and Manufacturing Services" at CPhI & P-MEC India Expo.
- **Utthama Suraksha Puraskar 2019** - (Pharma and Chemical Manufacturing Category) by National Safety Council of India (NSCI). Leadership Awards
- **Dream Companies to Work Award** at the 29<sup>th</sup> Edition of the World HRD Congress Awards.
- **Asian Leadership Award for Excellence in Branding and Marketing** in the Contract Research Development and Manufacturing category
- **CRISIL awards Syngene Top score among Indian Pharma:** for Environment Safety Governance (ESG)
- **Syngene ranked #69 in Fortune India magazine's** list of 'Top 100 Indian wealth creators 2021'
- **India Pharma Awards 2021** for Operational Excellence: Manufacturing organized by Informa Markets, India
- **Best Governed Company in the Listed Segment: Medium Category** at the 21st National Awards for Excellence in Corporate Governance by The Institute of Company Secretaries of India (ICSI)
- **Most Innovative New Learning Programme** at the L&D Vision & Innovation Award organized by Transformance Forums
- **Mahatma Award 2021** Under Health & Wellbeing Category
- **Best Corporate Foundation Award** at the World CSR Congress



# Robust risk management framework

Syngene has a risk management framework to identify, monitor, report and manage risk  
Every risk owner monitors and manages risks relevant to their area of responsibility



Refer [Annual report](#) for complete risk profile and risk mitigation strategy

4

Financials



## Q4FY23 financial highlights

Particulars	Q4 FY23	Q4 FY22	YoY change	Q3 FY23	QoQ change
<b>Revenue from operations</b>	<b>9,944</b>	<b>7,581</b>	<b>31%</b>	<b>7,859</b>	<b>27%</b>
Other income	228	147	56%	172	32%
<b>Reported revenue</b>	<b>10,172</b>	<b>7,728</b>	<b>32%</b>	<b>8,031</b>	<b>27%</b>
Material costs	2,938	2,149	37%	2,061	43%
Staff costs	2,528	1,797	41%	2,192	15%
Other direct costs	273	238	15%	264	3%
Other expenses	1,022	985	4%	876	17%
Foreign exchange (gain)/loss, net	42	-91	-146%	156	-73%
<b>EBITDA</b>	<b>3,369</b>	<b>2,650</b>	<b>27%</b>	<b>2,482</b>	<b>36%</b>
<b>EBITDA Margin</b>	<b>33.1%</b>	<b>34.3%</b>		<b>30.9%</b>	
Depreciation and Finance Cost	1,060	859	23%	1,083	-2%
<b>PBT</b>	<b>2,309</b>	<b>1,791</b>	<b>29%</b>	<b>1,399</b>	<b>65%</b>
Tax	522	313	67%	302	73%
<b>PAT</b>	<b>1,787</b>	<b>1,478</b>	<b>21%</b>	<b>1,097</b>	<b>63%</b>
<b>PAT Margin</b>	<b>17.6%</b>	<b>19.1%</b>		<b>13.7%</b>	

# FY23 financial highlights

Particulars	FY23	FY22	YoY Change
<b>Revenue from operations</b>	<b>31,929</b>	<b>26,042</b>	<b>23%</b>
Other income	710	528	34%
<b>Reported revenue</b>	<b>32,639</b>	<b>26,570</b>	<b>23%</b>
Material costs	8,602	7,490	15%
Staff costs	8,876	7,408	20%
Other direct costs	1,109	872	27%
Other expenses	3,580	2,859	25%
Foreign exchange (gain)/loss, net	418	-548	-176%
<b>EBITDA</b>	<b>10,054</b>	<b>8,489</b>	<b>18%</b>
<b>EBITDA Margin</b>	<b>30.8%</b>	<b>32.0%</b>	
Depreciation and Finance Cost	4,118	3,338	23%
<b>PBT</b>	<b>5,936</b>	<b>5,151</b>	<b>15%</b>
Tax	1,292	940	37%
<b>PAT before exceptional item</b>	<b>4,644</b>	<b>4,211</b>	<b>10%</b>
<b>PAT Margin</b>	<b>14.2%</b>	<b>15.8%</b>	
<b>PAT after exceptional item</b>	<b>4,644</b>	<b>3,958</b>	<b>17%</b>
<b>PAT Margin after exceptional item</b>	<b>14.2%</b>	<b>14.9%</b>	

(1) Other Assets calculated as (Inventories + Trade Receivables + Unbilled Revenues + Advance Tax + FX premium less (Trade payables + Others current liabilities) at the end of the year

(2) Net cash / (Net debt) calculated as the Cash & cash equivalents (Cash and bank balances + Current investments + Fixed deposits) less Total debt (Short-term borrowings + Long-term borrowings) at the end of the year

## Balance Sheet Highlights

As on 31<sup>st</sup> March 2023

Shareholders' funds	36,180
Net Fixed assets	28,437
Other net assets <sup>(1)</sup>	(1,818)
Net cash/(debt) <sup>(2)</sup>	9,561
<b>Total Use of Funds</b>	<b>36,180</b>

# 5

## Shareholding and Share Information



# Syngene and Biocon Group

## Syngene

**Syngene is an operationally independent publicly listed subsidiary of Biocon Limited, established in 1993 as India's first Contract Research Organization. Company has 25+ years of experience in novel molecule discovery, development and manufacturing services**

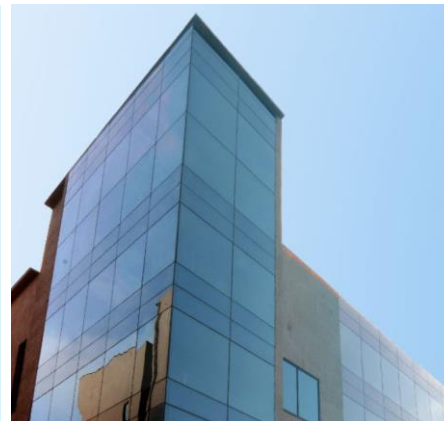


**Biocon Limited, founded in 1978, is an innovation-led global biopharmaceuticals company and has majority holding in key operating entities including Syngene**

**Syngene**

### **Integrated services:**

- Discovery research
- Development
- Manufacturing small/large molecules

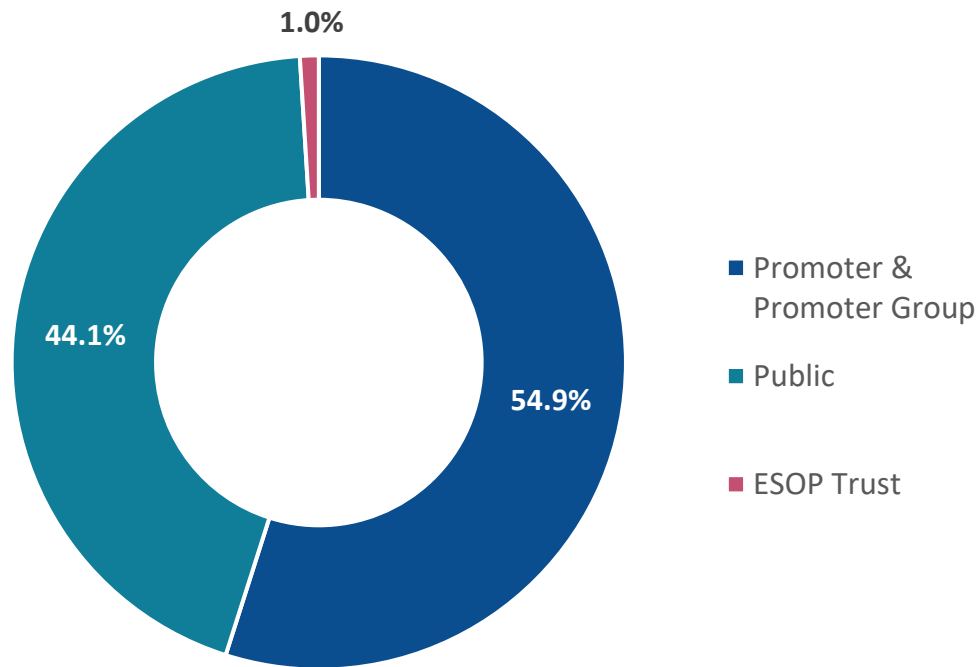


- Product Based
- Biosimilars
- Formulations and Compounds
- Alternative Therapeutic Drugs

**Biocon \***

# Shareholding and Share Information

## Syngene's Shareholding Pattern\*



## Syngene's Share Information\*

NSE Ticker	SYNGENE
BSE Ticker	539268
Market Cap (Rs. Mn)	2,38,653
% free-float	44%
Free-float market cap (Rs. Mn)	1,05,290
Share Outstanding (Mn)	401

## For more details

Visit our website [www.syngeneintl.com](http://www.syngeneintl.com)



<https://twitter.com/SyngeneIntl>



<https://www.linkedin.com/company/syngene-international-limited>



<https://www.facebook.com/syngeneintl/>



<https://www.youtube.com/channel/UCIC4WSA1k5YAC531gMLkblQ>

IR Contact:

**Krishnan G/ Suruchi Daga**

+ 91 9819992927/+91 8800176009

[investor@syngeneintl.com](mailto:investor@syngeneintl.com)

[krishnan.g@syngeneintl.com](mailto:krishnan.g@syngeneintl.com)

[suruchi.daga@syngeneintl.com](mailto:suruchi.daga@syngeneintl.com)

Media Contact:

**Shotorupa Ghosh**

+91 8450977080

[shotorupa.ghosh@syngeneintl.com](mailto:shotorupa.ghosh@syngeneintl.com)

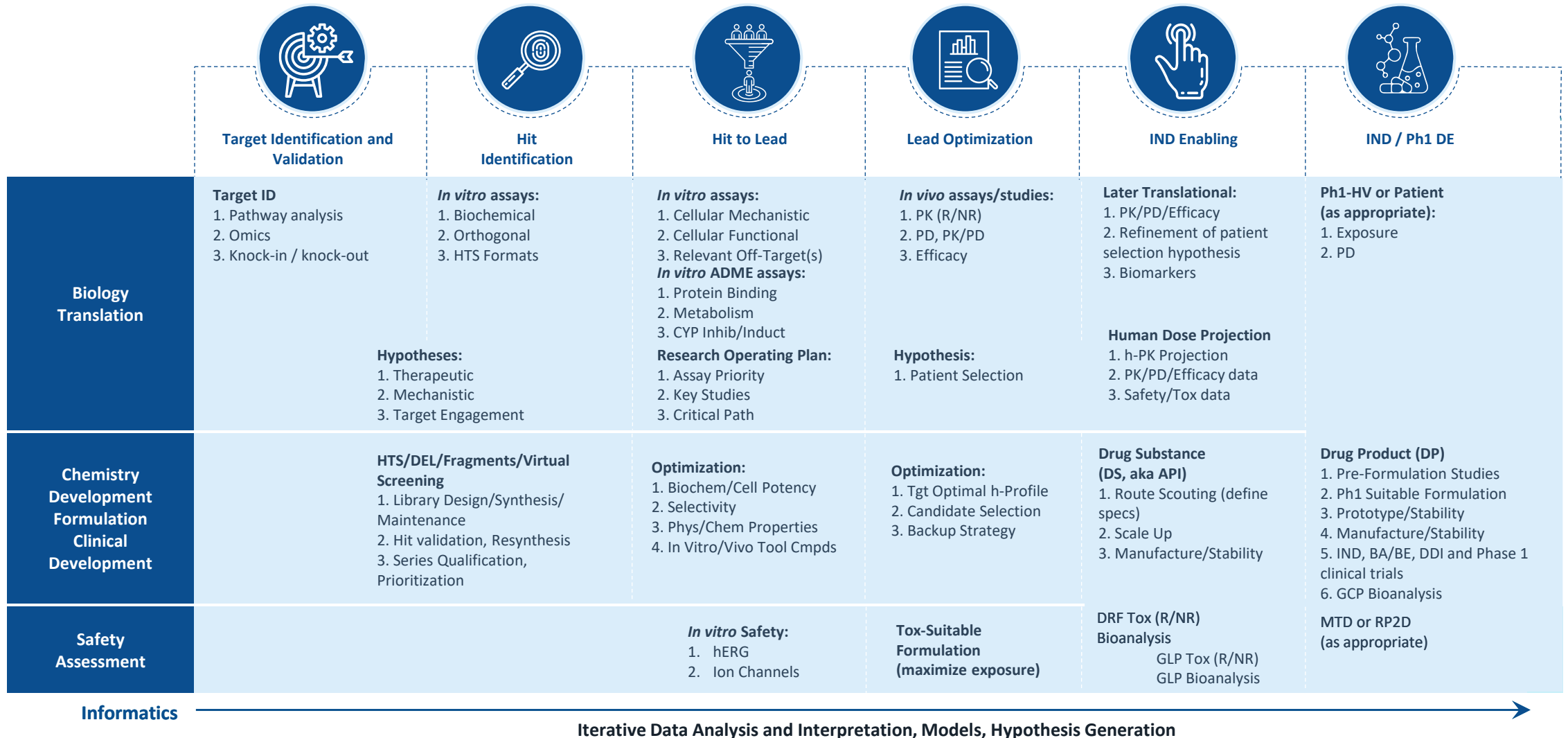









## Appendix



# Discovery Services

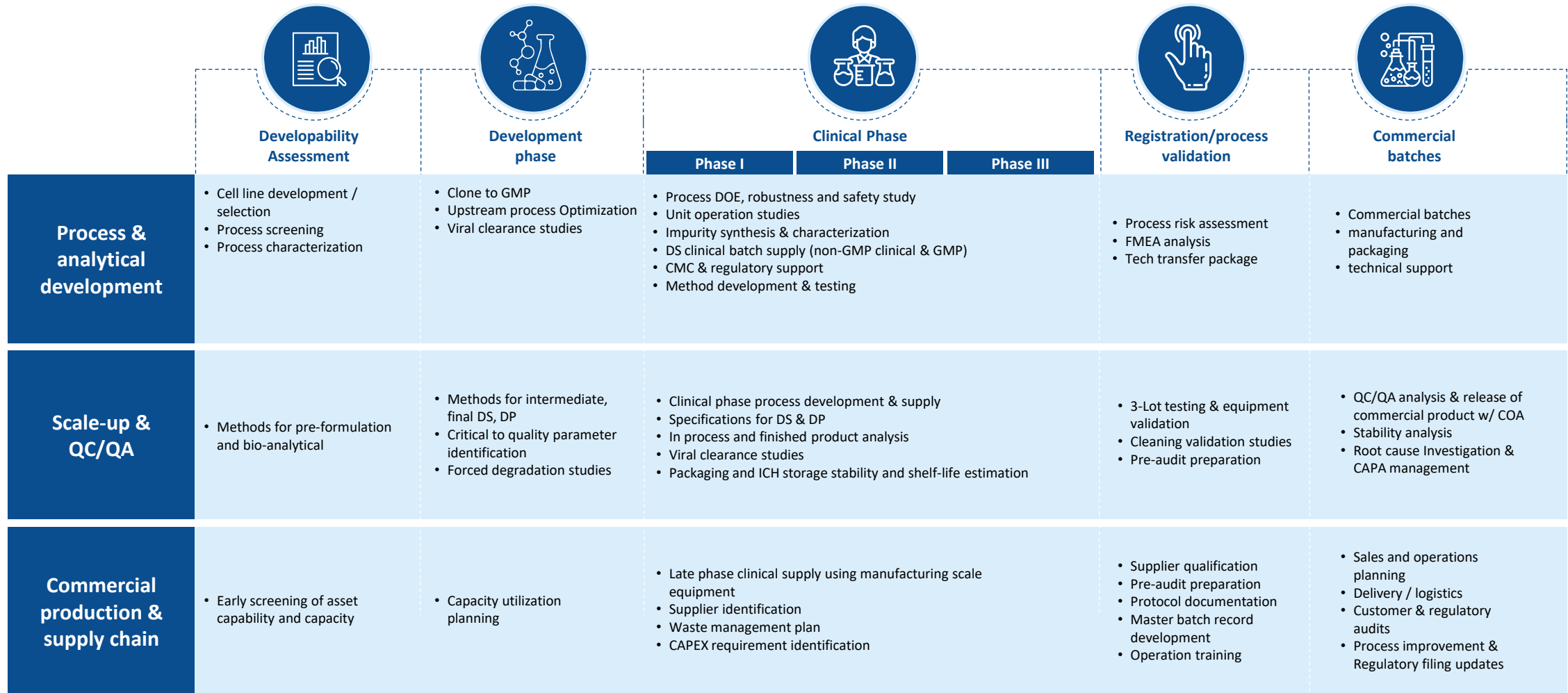


# Development Services and Manufacturing Services

	 <b>Developability Assessment</b>	 <b>Development phase</b>	 <b>Clinical Phase</b>			 <b>Registration/process validation</b>	 <b>Commercial batches</b>
			Phase I	Phase II	Phase III		
Safety Assessment	Early PK, MTD/DRF studies, Exploratory Tox	<ul style="list-style-type: none"> <li>IND enabling GLP Tox studies: Ames, Chromosomal aberration, Micronucleus tests, Pivotal repeat dose (Rodent and Non- rodent)</li> <li>Safety Pharmacology: CNS, Respiratory, CV Telemetry, hERG</li> </ul>		<ul style="list-style-type: none"> <li>NDA enabling studies: Sub- chronic and Repro-tox studies</li> <li>Local Tolerance study</li> </ul>	<ul style="list-style-type: none"> <li>Chronic and Carcinogenicity study</li> </ul>		
Chemical Dev and Manuf.	<ul style="list-style-type: none"> <li>Route scouting</li> <li>Process safety evaluation</li> <li>Scalability</li> </ul>	<ul style="list-style-type: none"> <li>Fit to purpose Process dev</li> <li>Material supply</li> <li>Impurity identification</li> <li>Enable and scale</li> <li>Tox material delivery</li> </ul>	<ul style="list-style-type: none"> <li>Process dev , robustness and safety study</li> <li>Unit operation studies</li> <li>Impurity synthesis &amp; characterization</li> <li>DS clinical batch supply</li> </ul>			<ul style="list-style-type: none"> <li>Process DOE, QBD and scale up studies</li> <li>Process Risk assessment</li> <li>FMEA analysis</li> <li>Registration and process validation batches manuf.</li> </ul>	Commercial batches manuf. and packaging
Formulation Dev and Manuf.	<ul style="list-style-type: none"> <li>Pre-formulation</li> <li>Salt polymorph screening</li> <li>Excipient compatibility</li> </ul>	<ul style="list-style-type: none"> <li>Solid Oral &amp; Injectable dosage forms</li> <li>Enabling formulation technologies</li> </ul>	<ul style="list-style-type: none"> <li>Clinical Supplies for all phases</li> <li>FIH formulation for Phase 1/2A</li> <li>Final dosage form for Phase 2B/3 and onwards</li> </ul>				
Analytical Services	Methods for Pre-formulation and Bio-analytical	<ul style="list-style-type: none"> <li>Methods for Intermediate, Final DS, DP</li> <li>Forced degradation studies</li> <li>Solid state characterisation</li> </ul>	<ul style="list-style-type: none"> <li>Phase appropriate method validation for DS &amp; DP (microbial methods)</li> <li>Specifications for DS &amp; DP</li> <li>In process and Finished product analysis</li> <li>Final batch release with COA</li> <li>Reference standard , Impurities, Isolation and characterisation</li> </ul>			Robustness of Analytical methods and full validation as per ICH	Analysis of commercial batches
Stability Services	Selection of suitable container closure system & packaging	<ul style="list-style-type: none"> <li>Development stability studies</li> </ul>	<ul style="list-style-type: none"> <li>ICH stability for all phases</li> <li>Shelf life Estimation</li> <li>Re-test extension</li> </ul>			Stability study of registration/ process validation batch	Stability study of commercial batches
Clinical Development			<ul style="list-style-type: none"> <li>Human Pharmacology Unit (Phase I/BE studies)</li> <li>Clinical Trial Services – full solution provider for conducting trials in India</li> <li>Central Lab Services including regulated bioanalytical lab</li> <li>Clinical data management, biostatistics and medical writing</li> </ul>				

Regulatory Support

# Biologics Development and Manufacturing services



Regulatory Support

# Syngene

Putting Science to Work

# Thank you

© 2023 Syngene International Limited, Bengaluru, India. All Rights Reserved. Syngene believes the information in this document is accurate as of its publication date; such information is subject to change without notice. Syngene acknowledges the proprietary rights of other companies to the trademarks, product names and such other intellectual property rights mentioned in this document. Except as expressly permitted, neither this documentation nor any part of it may be reproduced, stored in a retrieval system, or transmitted in any form or by any means, electronic, mechanical, printing, photocopying, recording or otherwise, without the prior permission of Syngene International Limited and/ or any named intellectual property rights holders under this document.

[www.syngeneintl.com](http://www.syngeneintl.com)

Stay Connected

